



100% Cotton washed twill cap, unstructured, low profile 6 panel cap with velcro closure. A great casual look with a smooth washed twill texture.

Color: Black; Chrome; Driftwood; Hunter; Khaki; Navy; Red; Royal

Size:

Material: Cotton; Twill

Production Time:

Product #: CP78

Quantity	One Size Fits Most
Price	\$ 9.25

Price Includes: One location embroidery

Imprint Size:

Imprint Color:

Imprint Method: Embroidery

Comments:



Heathers - Long sleeve 6.1 oz. 100% preshrunk cotton t-shirt. Seamless double needle collar with taped neck and shoulders, double needle bottom hem and quarter-turned to eliminate center crease. 2XL-5XL sizes will involve an additional cost. All colors not available in all sizes.

Color: Ash; Sports Gray, White

Size: S; M; L; XL; 2XL; 3XL; 4XL; 5XL

Material: Cotton

Production Time: 2 weeks

Product #: G2400

Quantity	SM-XL
Price	\$ 13.25

Price Includes: Left Chest Embroidery

Imprint Size:

Imprint Color:

Imprint Method: Left Chest Embroidery

Comments: XXL Add \$1.50, XXXL Add \$2.50



Ladies' ultra cotton t-shirt The industry's best selling t-shirt is now available in a dedicated ladies' fit. A completely redesigned cut make this tee the right choice for her. made of 6.1 oz. 100% cotton fabric, seamless collar, double needle stitching, taped neck and shoulders, shorter sleeve and body length, narrower neck rib and quality fit for a woman.

Color: Black; Dark Chocolate; Dark Heather; Iris; Light Blue; Light Pink; Lime; Navy; Pistachio; Red; Violet; Yellow Haze

Size: S; M; L; XL; 2XL

Material: Cotton

Production Time:

Product #: 2000L

Quantity	SM-XL
Price	\$ 8.40

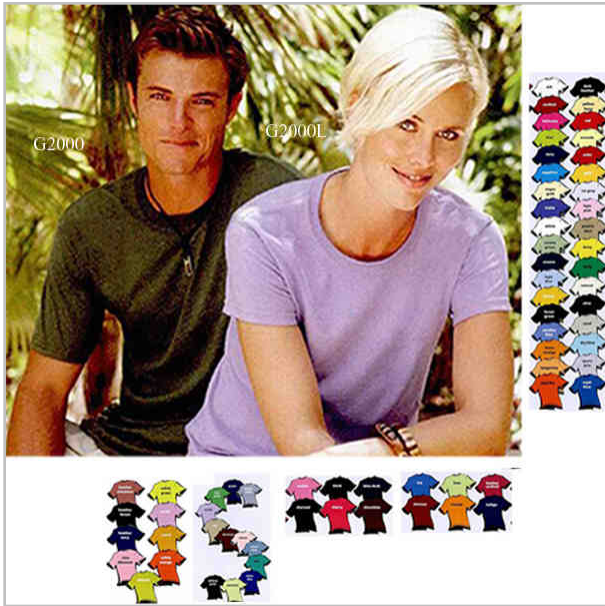
Price Includes: Left Chest Embroidery

Imprint Size:

Imprint Color:

Imprint Method: Left Chest Embroidery

Comments: XXL Add \$1.50



Colors - 6.1 oz. 100% cotton preshrunk t-shirt with seamless double needle collar, taped neck and shoulders, a double needle sleeve and bottom hems, ultra tight knit surface, and quarter-turned to eliminate center crease. 2XL-5XL sizes will involve an additional cost. Not all colors available in all sizes.

Color: Atlantis; Avocado; Azalea; Black; Blue Dusk; Cardinal; Carolina Blue; Cedar; Charcoal; Cherry Red; Chestnut; Chocolate; Daisy; Dark Heather; Forest Green; Gold; Heather Cardinal; Heather cinnamon; Heather Forest; Heather Indigo;...

Size: S; M; L; XL; 2XL; 3XL; 4XL; 5XL

Material: Cotton

Production Time: 1 days

Product #: G2000

Quantity	SM-XL
Price	\$ 9.50

Price Includes: Left Chest Embroidery

Imprint Size:

Imprint Color:

Imprint Method: Left Chest Embroidery

Comments: XXL Add \$1.50, XXXL Add \$2.50



Adult 7.75 oz. 50% cotton/50% polyester heavy blend crewneck sweatshirt with Air Jet Spun Yarn for no pilling. Double needle stitching throughout, banded bottom, 1x1 rib knit cuffs, collar, waistband with Lycra and set in sleeves. 2XL-5XL will involve additional costs. Not all colors are available in all sizes.

Color: Black; Forest; Light Pink; Maroon; Navy; Orange; Purple; Red; Royal

Size: S; M; L; XL; 2XL; 3XL; 4XL; 5XL

Material: Poly/Cotton Blend

Production Time:

Product #: 18000

Quantity	SM-XL
Price	\$ 11.95

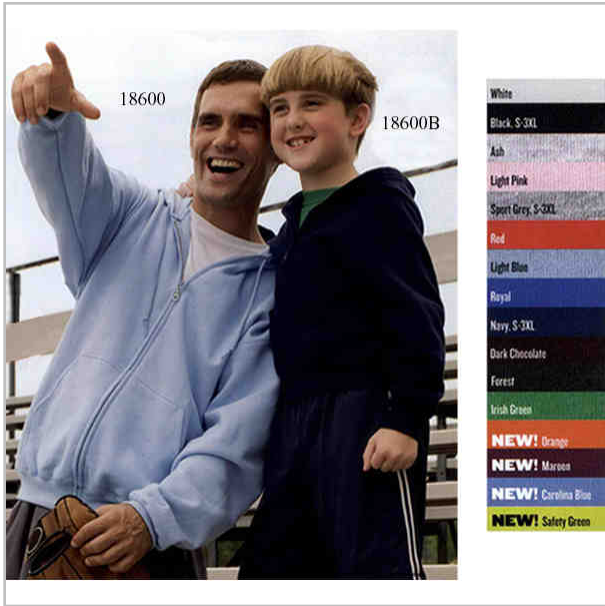
Price Includes:

Imprint Size:

Imprint Color:

Imprint Method: Left Chest Embroidery

Comments: XXL Add \$1.50, XXXL Add \$2.50



Adult full-zip hooded sweat shirt made of 7.75 oz. 50/50 cotton / poly. Air jet spun yarn softer feel and pill resistant. Double-needle stitching and 1x1 athletic rib with Lycra. Pouch pockets, YKK zipper and set in sleeves. Not all colors available in all sizes.

Color: Ash; Black; Carolina Blue; Dark Chocolate; Forest; Irish Green; Light Blue; Light Pink; Maroon; Navy; Orange; Red; Royal; Safety Green; Sport Gray; White

Size: M; L; XL; 2XL; 3XL; S

Material: Fleece; Poly/Cotton Blend

Production Time:

Product #: 18600

Quantity	SM-XL
Price	\$ 22.75

Price Includes: Left Chest Embroidery

Imprint Size:

Imprint Color:

Imprint Method: Embroidery

Comments: XXL Add \$2.00 XXXL Add \$3.00



7.75 oz., 50% Cotton/50% polyester heavy blend hooded sweat shirt with Air Jet Spun yarn, double needle stitched, two ply hood with dyed to match drawstring, set in sleeves, rib knit cuffs and bottom hem with Lycra and kangaroo pouch pocket. 2XL-5XL will involve additional costs. Not all colors are available in all sizes.

Color: Black; Dark Chocolate; Dark Heather; Forest; Irish Green; Light Blue; Light Pink; Maroon; Navy; Orange; Purple; Red; Royal; Sand

Size: S; M; L; XL; 2XL; 3XL; 4XL; 5XL

Material: Poly/Cotton Blend

Production Time:

Product #: 18500

Quantity	SM-XL
Price	\$ 18.25

Price Includes: Left Chest Embroidery

Imprint Size:

Imprint Color:

Imprint Method: Embroidery

Comments: XXL Add \$2.00 XXXL Add \$3.00



Blank, 100% combed cotton, 7 oz. pique body, solid trim, three-button placket, wood-tone buttons, double-needle top-stitching, locker patch, twill tape in neck and vents, dropped tail, replacement button. This Vantage polo shirt is great for restaurant and spa uniforms as well as tradeshows and golf outings. It is also excellent with any apparel order. Imported. XS-5XL. 2XL - 5XL sizes will involve additional costs.

Color: Aloe; Apple Green; Bahama Blue; Black; Burgundy; Dark Forest; Dark Sea Glass; Granite; Guava Green; Maize; Navy; Ocean; Red; Stone; White

Size: XS; S; M; L; XL; 2XL; 3XL; 4XL; 5XL

Material: Cotton

Production Time:

Product #: 2800

Quantity	SM-XL
Price	\$ 20.95

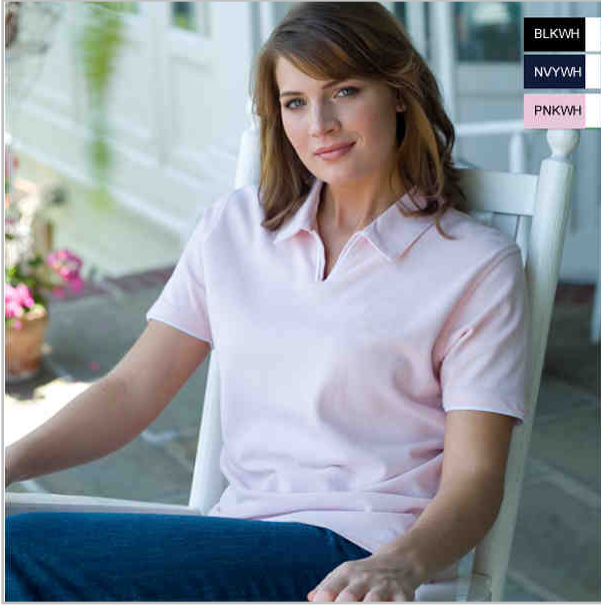
Price Includes: Left Chest Embroidery

Imprint Size:

Imprint Color:

Imprint Method: Embroidery

Comments: XXL Add \$1.50 XXXL Add \$2.50



Blank, 100% cotton, 6 oz. pique body, self-goods collar, open V-placket with contrasting jersey piping and collar band, hemmed sleeves with contrasting jersey mock layer, single-needle top-stitching, even hem bottom with contrasting jersey side vents. This Vantage Velocity polo shirt is great for restaurant and spa uniforms as well as tradeshow and golf outings. This item is also excellent with any apparel order. Imported. 2XL - 3XL will involve additional costs.

Color: Black; Navy; Pink

Size: XS; S; M; L; XL; 2XL; 3XL

Material: Cotton

Production Time:

Product #: 2516

Quantity	XS-XL
Price	\$ 22.95

Price Includes: Left Chest Embroidery

Imprint Size:

Imprint Color:

Imprint Method: Embroidery

Comments: XXL Add \$1.00 XXXL Add \$2.00



Embroidered ladies' 4.5 oz. 55/45 cotton/polyester blouse with open neck, front and back darts, dyed-to-match buttons, flattering modern open neck and collar and 3/4" sleeves with fashion cuffs. 2XL-Plus 2X sizes will involve additional costs.

Color: Light Blue; Light Green; Pale Pink; Pale Yellow; White

Size: XS; S; M; L; XL; 2XL; Plus 1X; Plus 2X

Material: Poly/Cotton Blend

Production Time: 10 days

Product #: L629

Quantity	XS-XL
Price	\$ 27.95

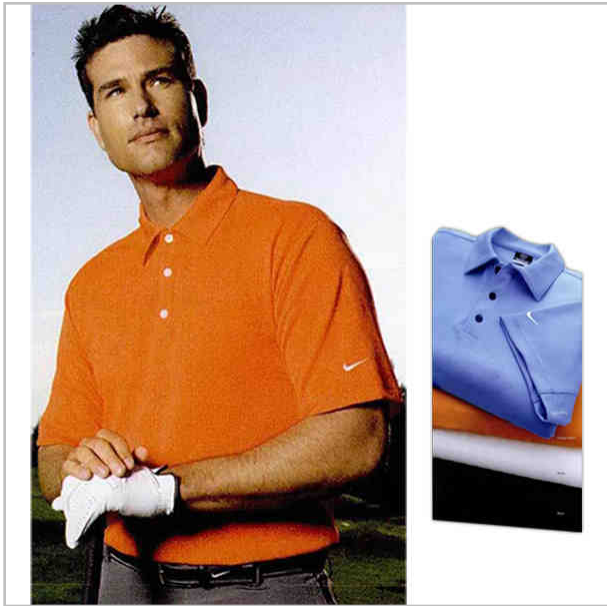
Price Includes: Left Chest Embroidery

Imprint Size:

Imprint Color:

Imprint Method: Embroidery

Comments: XXL Add \$1.50 Plus 1 X Add \$2.50 Plus @X Add \$3.50



6.9 oz., 92% polyester / 8% spandex Sphere Dry pro sport shirt with stretch fabric underarm gussets allow for freedom of movement, self fabric collar, 3 button placket, hemmed sleeves, contrast swoosh design trademark with embroidered on left sleeve. This moisture wicking fabric has a bumpy inside surface to reduce cling and free your movements while speeding evaporation. 2XL - 4XL will involve additional costs.

Color: Black; Legend Blue; Orange Blaze; White

Size: XS; S; M; L; XL; 2XL; 3XL; 4XL

Material: Polyester; Spandex

Production Time:

Product #: 203691

Quantity	XS-XL
Price	\$ 58.00

Price Includes: Left Chest Embroidery

Imprint Size:

Imprint Color:

Imprint Method: Embroidery

Comments: XXL Add \$1.50 XXXL Add \$2.50 XXXXL Add \$3.50



Dri-fit UV patterned sport shirt. 5.16 oz, 100% polyester Dri-Fit UV fabric that provides UPF 30 protection. Self-fabric collar, 3-button placket and open sleeves. The contrast swoosh design trademark is embroidered on left sleeve. With one touch, you'll appreciate the superior quality of this extraordinarily comfortable sport shirt. This sport shirt pairs a subtle pattern with the undeniable performance. Larger sizes will involve additional costs.

Color: Black-Soft Gray; French Blue-Legend Blue; Team Red-Solar Orange

Size: XS; S; M; L; XL; 2XL; 3XL; 4XL

Material: Polyester

Production Time:

Product #: 286776

Quantity	XS-XL
Price	\$ 51.75

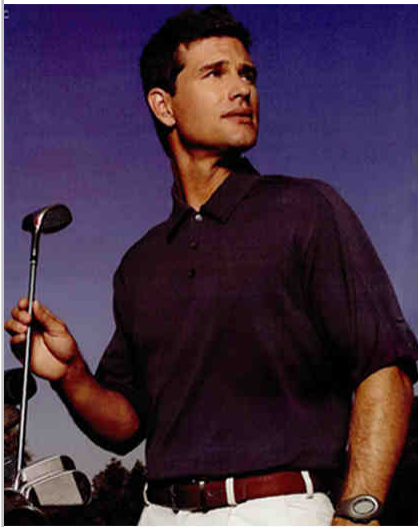
Price Includes: Left Chest Embroidery

Imprint Size:

Imprint Color:

Imprint Method: Embroidery

Comments: XXL Add \$1.50 XXXL Add \$2.50 XXXXL Add \$3.50



4.1 oz. 100% polyester tech sport Dri-Fit polo shirt with self fabric collar, 3-button placket, open sleeves, contrast swoosh design trademark embroidered on left sleeve. Stay in the dry zone with exceptional moisture control. Crafted from Dri-Fit fabric, this new sport shirt keeps you cool and dry. The stitch trimmed gussets make a distinctive statement and allow for easy movement. Larger sizes will involve additional costs.

Color: Anthracite; Black; Navy; Pacific Blue; Solar Orange; Team Red; White

Size: XS; S; M; L; XL; 2XL; 3XL; 4XL

Material: Polyester

Production Time:

Product #: 266998

Quantity	XS-XL
Price	\$ 25.95

Price Includes: Left Chest Embroidery

Imprint Size:

Imprint Color:

Imprint Method: Embroidery

Comments: XXL Add \$1.50 XXXL \$Add \$2.50 XXXXL Add \$3.50



3.5 oz. 100% polyester double micro mesh sport shirt with flat knit collar, 3-button placket and side vents. Double-needle stitching on armholes, shoulders and bottom hem, taped neck and hemmed sleeves. Take the seat out of working at high speeds or humidity. Advanced double poly mesh has all the advantages of lightweight moisture wicking and breathability in a classic style that's full of confidence. 2XL - 4XL will involve additional costs.

Color: Black; Blueberry; Bright Orange; Dark Green; Forest Green; Gold; Kelly; Maroon; Navy; Purple; Red; Royal; Sandstone; Steel; Texas Orange; White

Size: XS; S; M; L; XL; 2XL; 3XL; 4XL

Material: Mesh; Polyester

Production Time:

Product #: K469

Quantity	XS-XL
Price	\$ 21.95

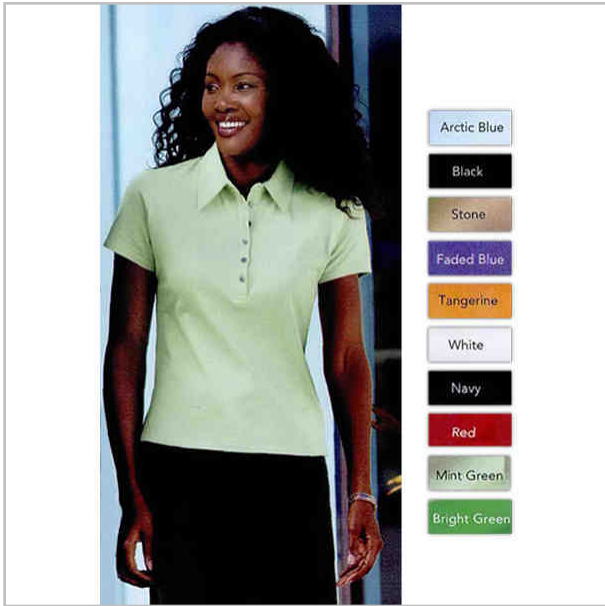
Price Includes: Left Chest Embroidery

Imprint Size:

Imprint Color:

Imprint Method: Embroidery

Comments: XXL Add \$1.50 XXXL Add \$2.50 XXXXL Add \$3.50
Ladies coordinate available at prices shown above (include Pink)



Ladies' 5.3 oz. 100% Supima (R) Pima cotton fine knit sport shirt gracefully shaped to complement the feminine figure with self fabric collar, 5-button placket, traditional, relaxed look, double-needle armholes, shoulder and hem with smoked pearl buttons. Ideal for fine knit, luxurious fabrics. Crafting this elegant garment from 2 ply yarn gives it a noticeably softer feel and longer lasting good looks. 2XL will involve additional costs.

Color: Arctic Blue; Black; Bright Green; Faded Blue; Mint Green; Navy; Red; Stone; Tangerine; White

Size: XS; S; M; L; XL; 2XL

Material: Cotton

Production Time:

Product #: L449

Quantity	XS-XL
Price	\$ 23.95

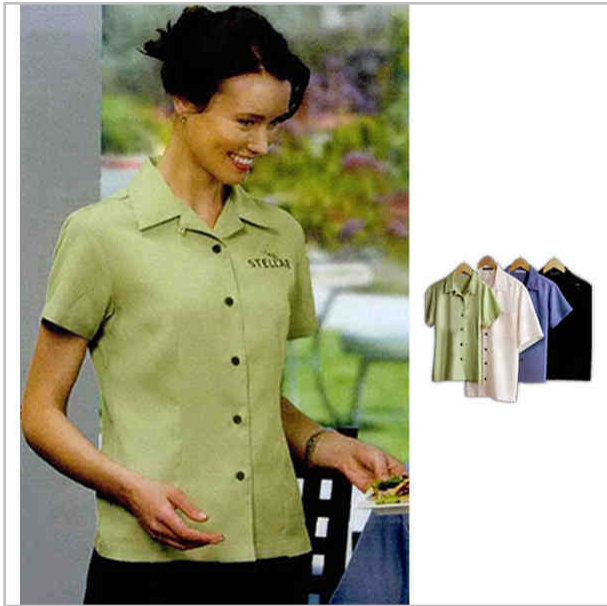
Price Includes: Left Chest Embroidery

Imprint Size:

Imprint Color:

Imprint Method: Embroidery

Comments: XXL Add \$1.50 Plus 1 X Add \$2.50 Plus 2X Add \$3.50



Ladies' easy care camp shirt. Gently contoured silhouette, no patch pocket and front and back darts. 2XL will involve additional costs.

Color:

Size: XS; S; M; L; XL; 2XL

Material:

Production Time:

Product #: L535

Quantity	XS-XL
Price	\$ 26.50

Price Includes: Left Chest Embroidery

Imprint Size:

Imprint Color:

Imprint Method: Embroidery

Comments: XXL Add \$1.50



70% Cotton and 30% nylon sandwich bill cap, unstructured, low profile, 6 panel with velcro closure. CoolMax (R) sweatband for moisture wicking. Light brushing and garment washing create an unmistakably soft hand on this moisture wicking cap.

Color: Beige; Black; Dill; White

Size:

Material: Cotton; Nylon

Production Time:

Product #: PH03

Quantity	One Size Fits Most
Price	\$ 13.95

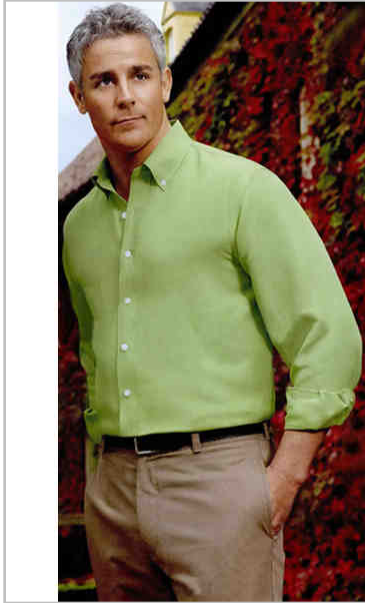
Price Includes: Front Embroidery

Imprint Size:

Imprint Color:

Imprint Method: Embroidery

Comments:



55% silk / 45% linen woven shirt with button-down collar, shirttail hem, engraved buttons and embroidery on the right- sleeve plackets. Indulge the sense with a lush mixture of silk and linen. The timeless texture of linen woven with our luxurious silk. 2XL - 4XL will involve additional costs.

Color: Arcadian Green; Cadmium Orange; Marina Blue; Navy

Size: XS; S; M; L; XL; 2XL; 3XL; 4XL

Material: Linen; Silk

Production Time:

Product #: RH26

Quantity	XS-XL
Price	\$ 57.95

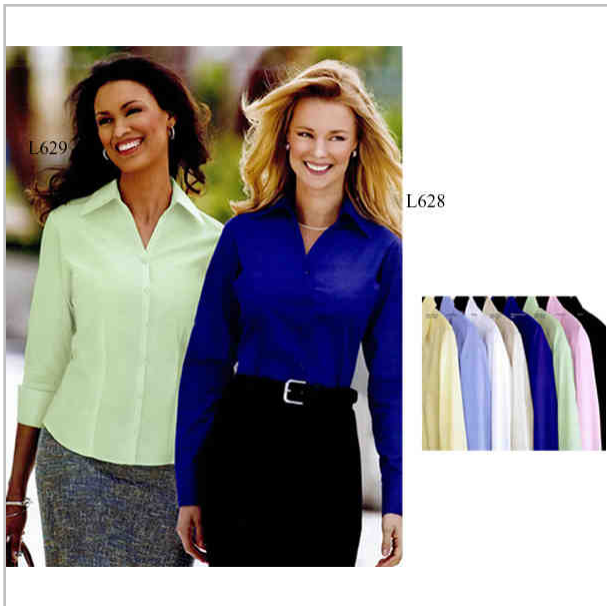
Price Includes: Left Chest Embroidery

Imprint Size:

Imprint Color:

Imprint Method: Embroidery

Comments: XXL Add \$1.50 XXXL Add \$2.50 XXXXL Add \$3.50



Ladies' 3/4 sleeve with fashion cuffs open neck blouse, 55% cotton / 45% polyester, dyed to match buttons and front and back darts, 4.5 oz., gently contoured silhouette, open neck. Blouses this chic shouldn't stay in the office all day, they certainly have professional grace, but a fun side, too. And they do it with crisp tailoring and an irresistibly feminine shape. 2XL will involve additional cost.

Color: Light Blue; Light Green; Pale Pink; Pale Yellow; White

Size: XS; S; M; L; XL; 2XL

Material: Poly/Cotton Blend

Production Time:

Product #: L629

Quantity	XS-XL
Price	\$ 27.95

Price Includes: Left Chest Embroidery

Imprint Size:

Imprint Color:

Imprint Method: Embroidery

Comments: XXL Add \$1.50



Long sleeve easy care 4.5 oz. lightweight 45% polyester / 45% cotton twill shirt with button-down collar, patch pocket. Dyed to match buttons, box back pleat and adjustable cuffs. Our wrinkle resistant shirts are a cut above the competition so you and your staff can be, too. A comfortable, wash and wear shirt is indispensable for the workday. 2XL - 10XL will involve additional costs.

Color: Classic Navy-Light Stone; Coffee Bean-Light Stone; Court Green; Eggplant-Light Stone; Harvest Gold; Hibiscus; Light Pink; Steel Gray-Light Stone; Stone; Texas Orange-Light Stone; Tropical Pink; Yellow

Size: XS; S; M; L; XL; 2XL; 3XL; 4XL;...

Material: Poly/Cotton Blend

Production Time:

Product #: S608

Quantity	XS-XL
Price	\$ 19.50

Price Includes: Left Chest Embroidery

Imprint Size:

Imprint Color:

Imprint Method: Embroidery

Comments: XXL Add 1.50 XXXL Add \$2.50 XXXL Add \$3.50
Ladies companion available at prices shown above.



6.1 oz. 100% cotton t-shirt with seamless double-needle collar, taped neck and shoulders, double-needle 5-point pocket and double-needle sleeves and hem. 2XL - 5XL will involve additional costs.

Color: Black; Navy

Size: S; M; L; XL; 2XL; 3XL; 4XL; 5XL

Material: Cotton

Production Time:

Product #: 2300

Quantity	SM-XL
Price	\$ 10.95

Price Includes: Left Chest Embroidery

Imprint Size:

Imprint Color:

Imprint Method: Embroidery

Comments: XXL Add \$1.50 XXXL Add \$2.50 XXXXL Add \$3.50